



# Software Update Procedure

## GRX-3590 Ford Revision E

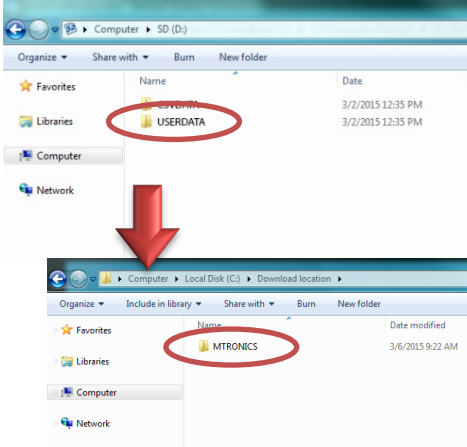

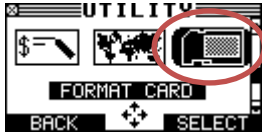
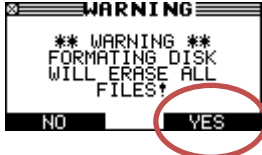
This instruction manual describes the process to successfully update your Battery Diagnostic Station.

Read the instruction carefully and follow the steps listed.

**Note:** The location of the icons shown on the screen pictures in this procedure may be different from the real location in your Battery Diagnostic Station due to different versions.

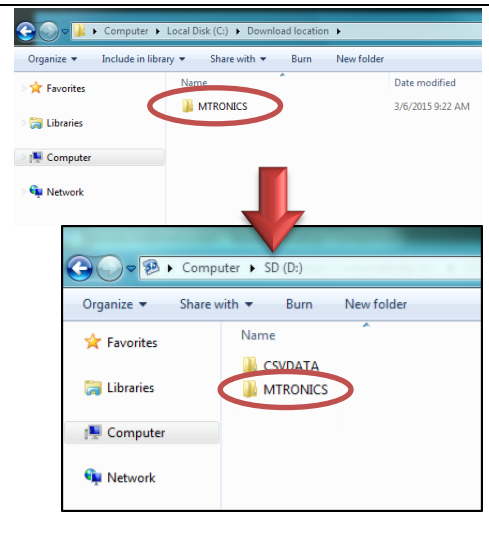
## **Step 1. Preparing for Update**

During the following update process, the SD card will be formatted and therefore the stored data will be lost. To save the data, remove the SD card from the Battery Diagnostic Station (from here referred to as GRX-3590) and save the files from the SD card onto a local PC.

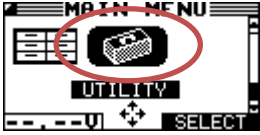

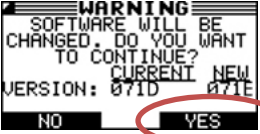
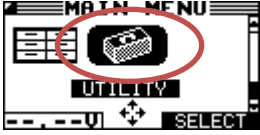

<p><b><u>Remove SD card from GRX-3590 and insert into PC</u></b></p> <p>Remove the SD card from the GRX-3590 and insert the SD card into the PC.</p>	
<p><b><u>Store USER DATA to PC</u></b></p> <p>Store the USER DATA from the SD card to a local PC to prevent loss of data during the update process.</p>	
<p><b><u>Remove SD card from PC and insert into GRX-3590</u></b></p> <p>Remove the SD card from the PC and insert the SD card into the GRX-3590 and switch it on.</p>	
<p><b><u>Select Utility menu</u></b></p> <p>Select UTILITY from the MAIN MENU of the GRX-3590.</p>	
<p><b><u>Format SD Card inside the GRX-3590</u></b></p> <p>Select FORMAT CARD from the UTILITY MENU</p>	
<p><b><u>Format SD Card inside the GRX-3590</u></b></p> <p>Select YES when the warning screen appears.</p>	
<p><b><u>Remove SD card from GRX-3590 and insert into PC</u></b></p> <p>Remove the SD card from the GRX-3590 and insert the SD card into the PC.</p>	

**Save update files to SD card**

Download the update files and save them onto the SD card.



## Step 2. Update GRX-3590 firmware

<p><b><u>Remove SD card from PC and insert into GRX-3590</u></b></p> <p>Remove the SD card from the PC and insert the SD card into the GRX-3590 and switch it on.</p>	
<p><b><u>Select Utility menu</u></b></p> <p>Select UTILITY from the MAIN MENU of the GRX-3590.</p>	
<p><b><u>Select Update menu</u></b></p> <p>Select UPDATE in the UTILITY MENU.</p>	
<p><b><u>Update GRX-3590 firmware</u></b></p> <p>As soon as the update warning screen appears, select YES.</p>	
<p><b><u>Update GRX-3590 firmware</u></b></p> <p>The GRX-3590 will start reprogramming the flash memory. This will take approximately 40 minutes. <b>Please do NOT interrupt!</b></p> <p>When programming is completed the GRX-3590 will ask you remove the SD card and reboot. If you reinsert the SD card, the GRX-3590 will automatically recognize the update file from the SD card and will ask you to update again. Press the EXIT soft key to abort.</p>	
<p><b><u>Select Utility menu</u></b></p> <p>Select UTILITY from the MAIN MENU of the GRX-3590.</p>	
<p><b><u>Format SD Card inside tester</u></b></p> <p>Select <b>FORMAT CARD</b> from the <b>UTILITY MENU</b></p>	
<p><b><u>Format SD Card inside tester</u></b></p> <p>Select <b>YES</b> when the warning screen appears.</p>	